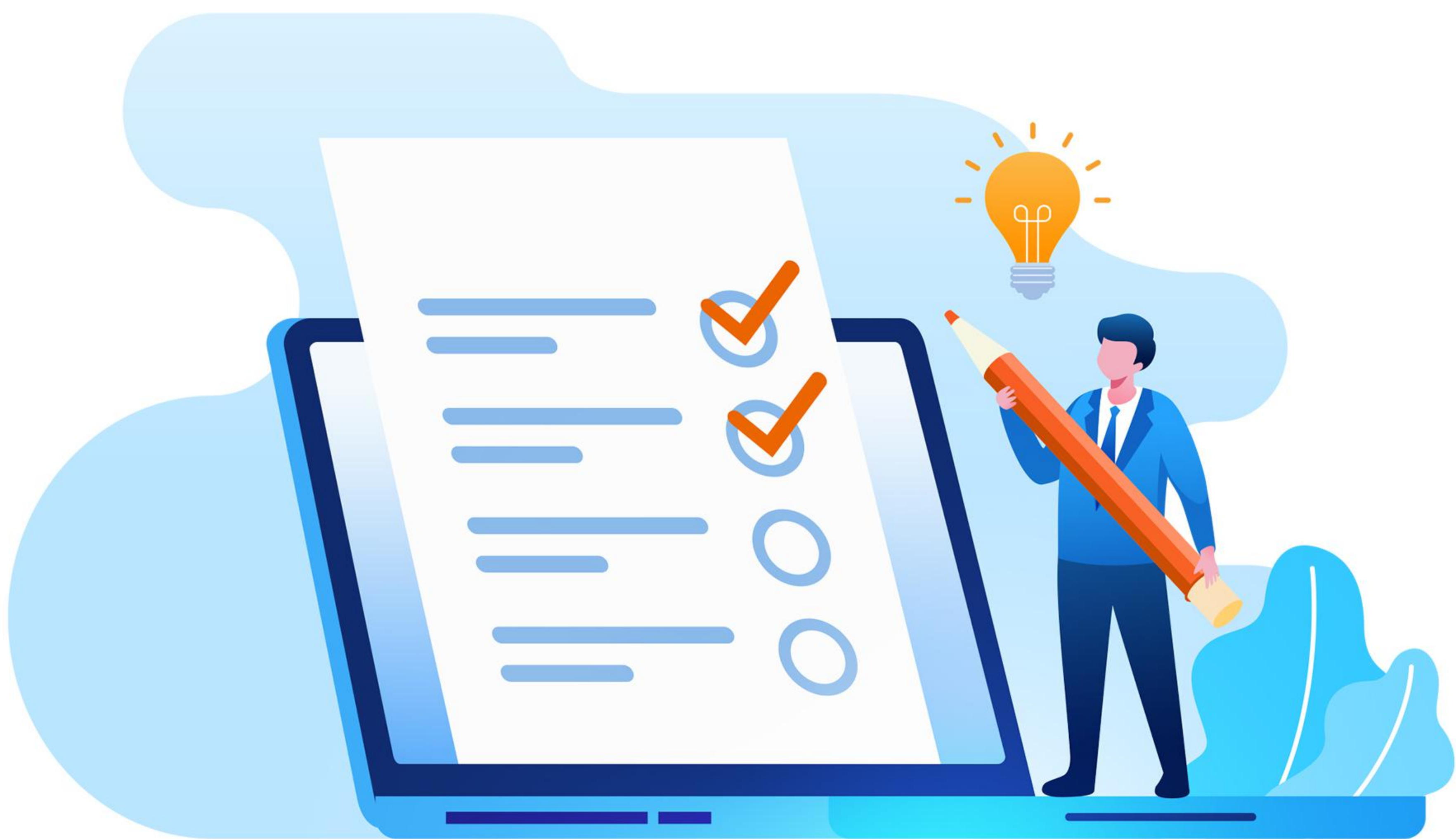




CA FINAL

Nov 22



TEST SERIES



3 REASONS WHY TO JOIN EDNOVATE TEST SERIES

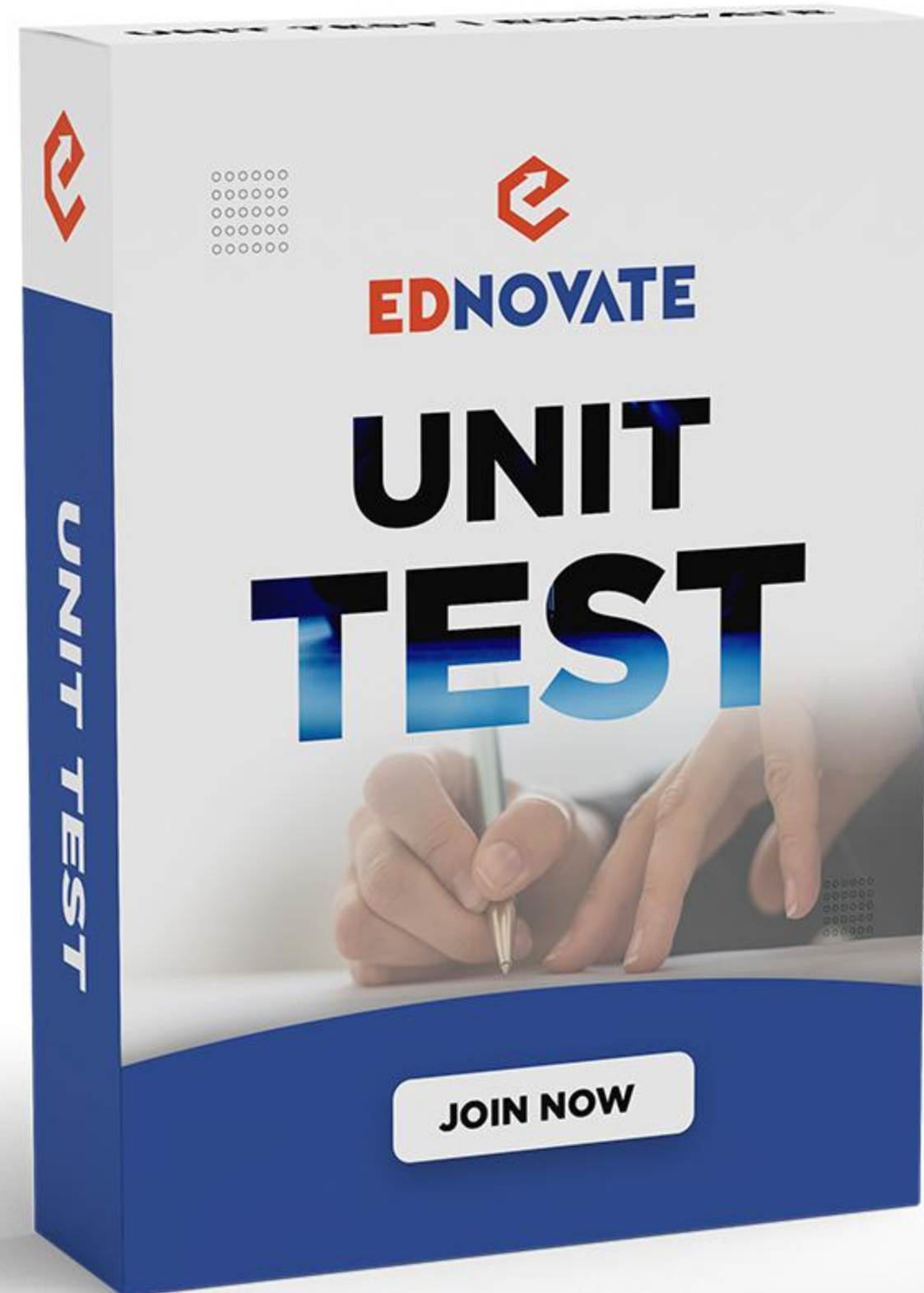
1 
**CHECKING
TO BE DONE BY
RANKER
CHARTERED ACCOUNTANTS**

2 
KYM REPORT
That gives you detailed analysis about your mistakes.

3 
**EXCLUSIVE
SESSION WITH
OUR FACULTIES
& RANK HOLDERS**
Who will give you insights on how to write your exam paper.

TEST SERIES

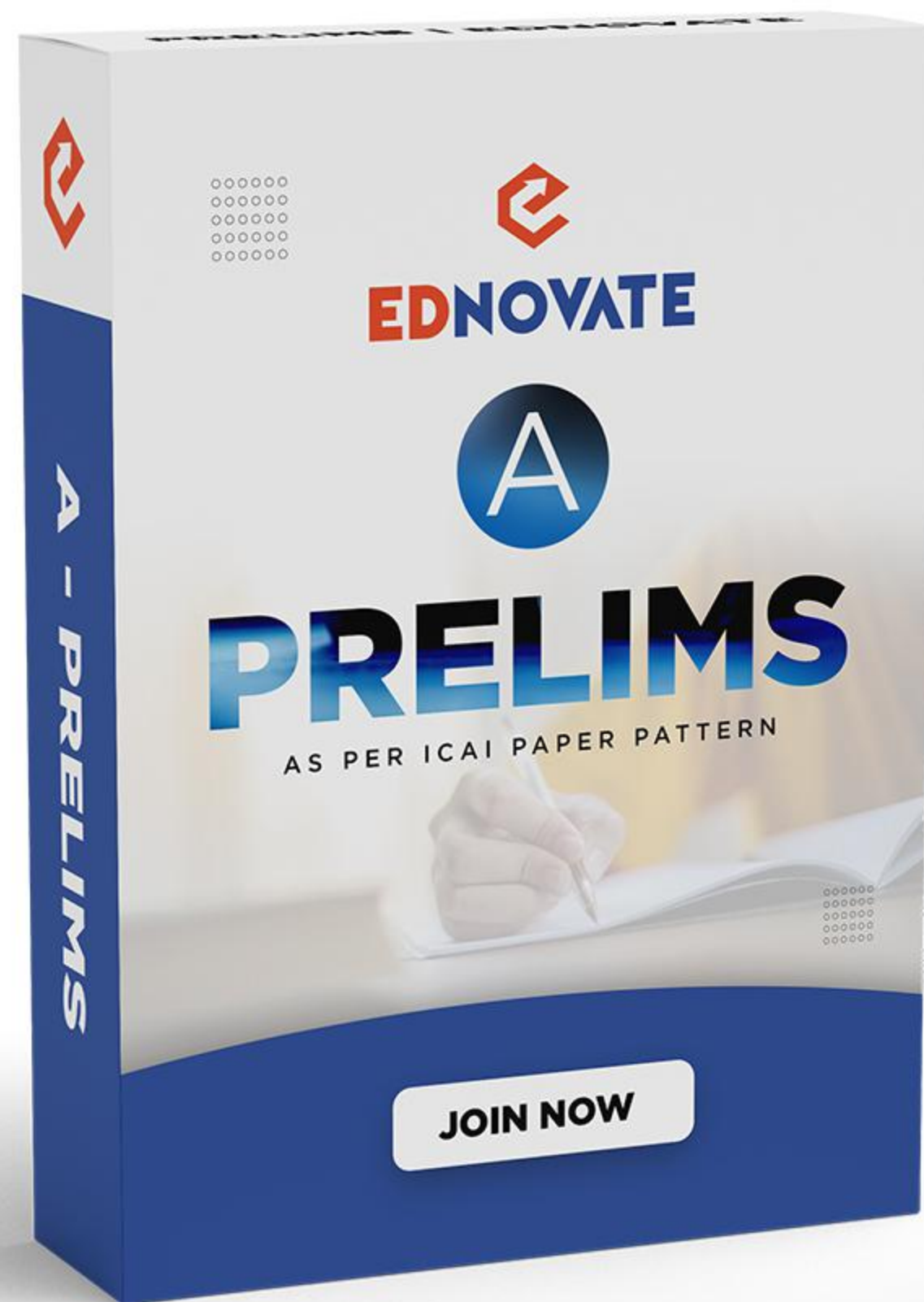
Fees Structure



UNIT TEST | ₹2500/-

(Incl. GST)

- | | |
|--------------------------|----------------------|
| • Unit 1 - 8 Papers | 50 Marks each |
| • Unit 2 - 8 Papers | 50 Marks each |
| Total - 16 Papers | 50 Marks each |



A - PRELIMS | ₹2500/-

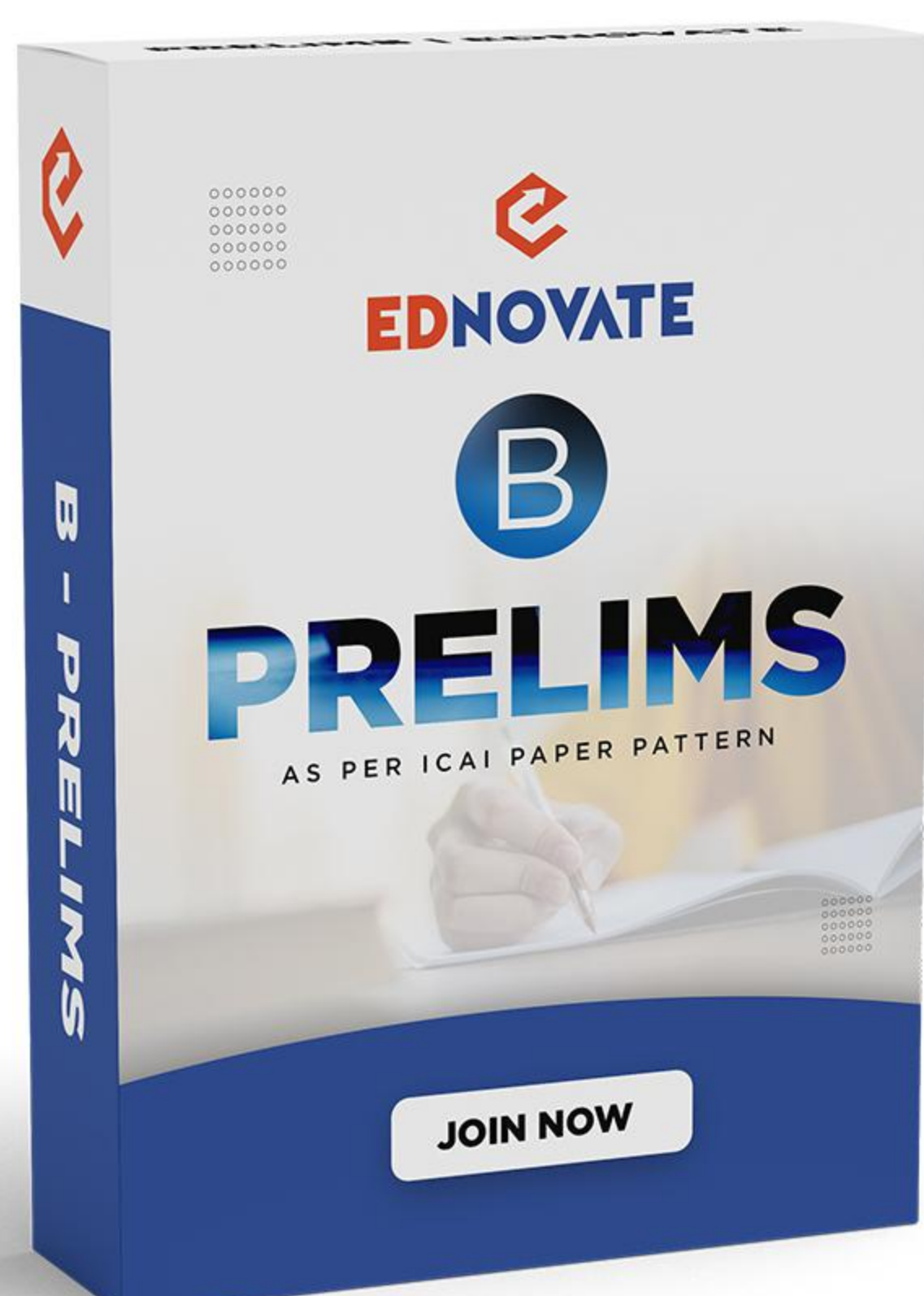
MOCK AS PER ICAI (Incl. GST)



8 Papers



100 Marks each
(as per ICAI paper pattern)



B - PRELIMS | ₹2500/-

MOCK AS PER ICAI (Incl. GST)



8 Papers



100 Marks each
(as per ICAI paper pattern)

TEST SERIES

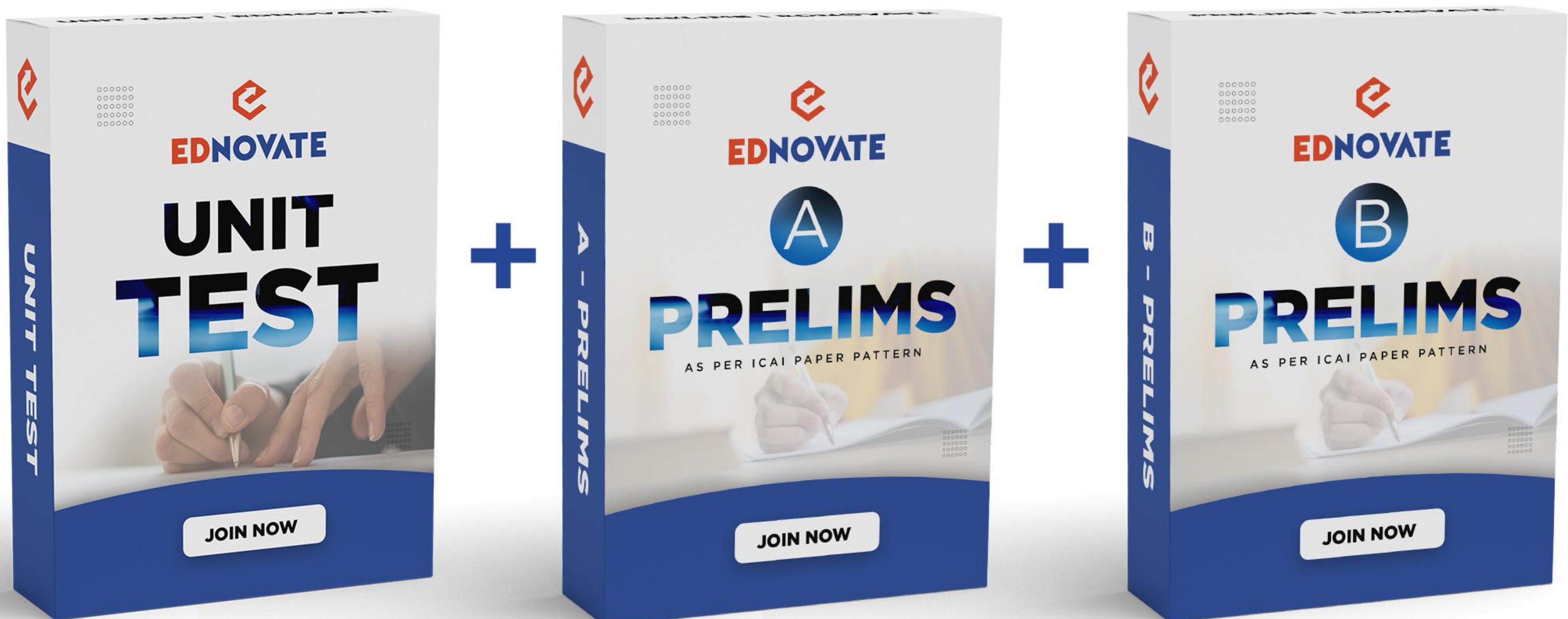
Fees Structure



A+B | PRELIMS | ₹4999/-
MOCK AS PER ICAI (Incl. GST)

COMBO

UNIT TEST + PRELIMS



₹5999/-

(Incl. GST)

PAPER 1 | Financial Reporting

UNIT-1

- Share Based Payments
- CSR
- Consolidated Financial Statements
- Business Combinations
- IND AS 109, IND AS 32 ,IND AS 107
- Integrated Reporting
- Analysis of Financial statement
- IND AS 116 : Leases

UNIT-2

- IND AS (Others)

PAPER 2 | Strategic Financial Management

UNIT-1

- Security valuation
- Portfolio management
- Mergers & Acquisitions
- Mutual funds
- Money market operations
- Value at risk
- Project beta
- Financial Policy and Corporate Strategy
- Risk Management

UNIT-2

- Forex
- Derivatives
- Currency derivatives
- Interest rate risk management
- International financial management
- Economic value added
- Securitization
- Startup Finance

PAPER 3 | Advanced Auditing & Professional Ethics

UNIT-1

- Auditing standards
- Audit planning, strategy, execution
- Risk assessment & internal control
- Special aspects of auditing in an automated environment
- Audit report
- Professional ethics
- Company Audit

UNIT-2

- Audit committee & corporate governance
- Audit of CFS
- Audit of Bank, Insurance, NBFC
- Audit under fiscal laws
- Audit of PSU
- Liability of auditors
- Internal audit operations audit
- Due diligence, Investigation Forensic
- Peer review

PAPER 4 | Corporate, Security & Economic Law

UNIT-1

- IBC, 2016
- FCRA, 2010
- Chapter XI - Appointment and Qualification of Directors
- Chapter XII - Meetings of the Board and its Power
- Chapter XIII - Appointment and Remuneration of Managerial Personnel
- Chapter XIV - Inspection, Inquiry and Investigation

UNIT-2

- SEBI Act, 1992
- SEBI LODR, 2015
- PMLA, 2002
- Arbitration and Conciliation Act, 1996
- FEMA, 1999
- Chapter XXII - Companies Incorporated Outside India
- Chapter XXIII - Government Company
- Chapter XXVI - Nidhi Company
- Chapter XXVII - NCLT and NCLAT
- Chapter XXVIII - Special Courts
- Chapter XXIX - Offences under Companies Act, 2013
- Chapter XV - Compromise, arrangement and Amalgamation
- Chapter XVI - Prevention from Oppression and Mismangement
- Chapter XVII - Registered Valuer
- Chapter XVIII - Removal of Names of companies from ROC
- Chapter XX - Winding Up
- Corporate Secretarial Practice

PAPER 5 | SCM&PE

UNIT-1

- Introduction to Strategic Cost Management
- Modern Business Environment
- Lean System and Innovation
- Cost Management Technique
- Decision Making
- Pricing Decision

UNIT-2

- Performance Measurement and Evaluation
- Divisional Transfer Pricing
- Strategic Analysis of Operating Income
- Budgetary Control
- Standard Costing

PAPER 7 | Direct Tax

UNIT-1

- Profits and gains from Business & profession + ICDS
- Assessment of Company/MAT
- Alternate Minimum Tax
- Basic Concepts
- General Anti Avoidance Rule
- Transfer Pricing
- Double taxation avoidance agreement
- Authority of advance ruling
- NR Taxation
- Residential Status and Scope of income
- Special Rate of Tax
- Equalisation Levy
- Model Tax convention
- Base Erosion profit shifting
- Application and interpretation of tax treaty

PAPER 7 | Direct Tax

UNIT-2

- Income from Salary
- Income from House Property
- Clubbing of Income
- Set off and Carry forward of losses
- Deduction from gross total Income
- Section 10AA
- Agriculture Income
- Section 14A
- Settlement Commission
- Appeals and Revision
- Penalty
- Prosecution
- TDS/TCS/Advance Tax
- Interest u/s 234A, 234B and 234C
- Refunds
- Recovery Proceedings
- Liability in special cases
- Assessment of various entities
- Assessment of Firm
- Assessment of AOP/BOI
- Assessment of Business trust
- Assessment of Investment Fund
- Assessment of Charitable trust
- Assessment of Political Party
- Assessment of Securitization Trust
- Assessment of Electoral Trust
- Tonnage Taxation
- Assessment of Mutual Concern
- Miscellaneous provision
- Income from Capital Gains
- Income from Other Source
- Assessment procedure/Income tax authorities
- Tax planning , Tax avoidance , Tax Management

PAPER 8 | Indirect Tax

UNIT-1

- Introduction
- Charging section
- Composition scheme
- Supply
- Tax invoice
- Time of supply
- Value of supply
- Place of supply
- Registration
- Returns
- Exemptions
- Accounts and records
- Input tax credit
- FTP

UNIT-2

- IGST
- Audit and assessment
- Inspection search, Seizure & arrest
- Import & Export under GST
- Demand and recovery
- Refunds
- Appeals and revision
- Miscellaneous provisions
- Advance rulings
- Offences and penalties
- Job work
- Liability to pay in certain cases
- Customs
- Ewaybill
- TDS /TCS
- Payment of tax